

MONTHLY MEMBERSHIP PROGRESS REPORT

LOCATION CONNECTICUT

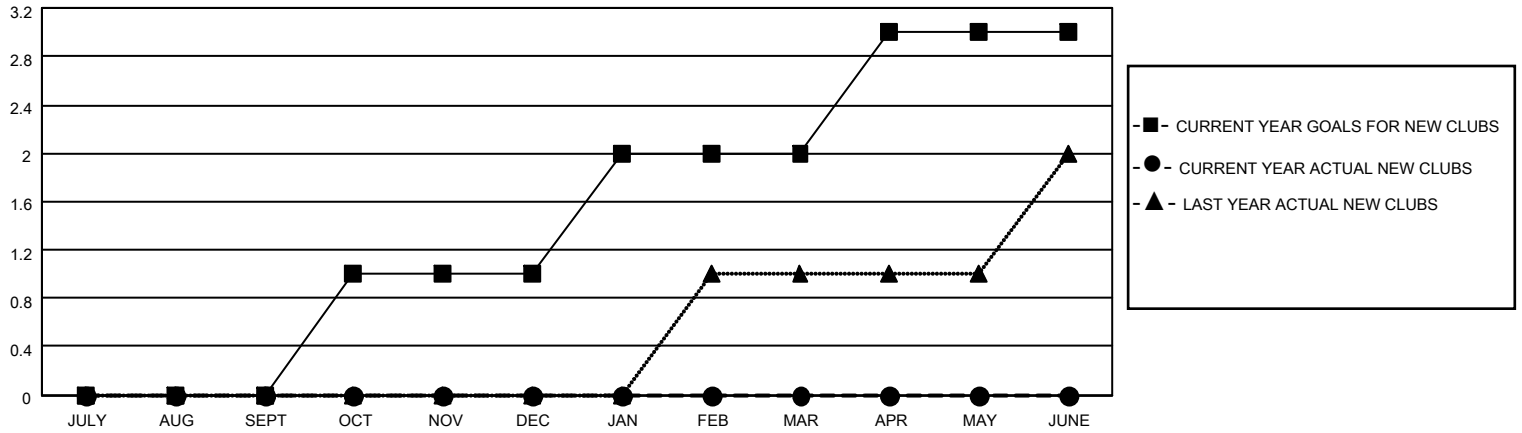
District 23 C

Results as of: 5/31/2021

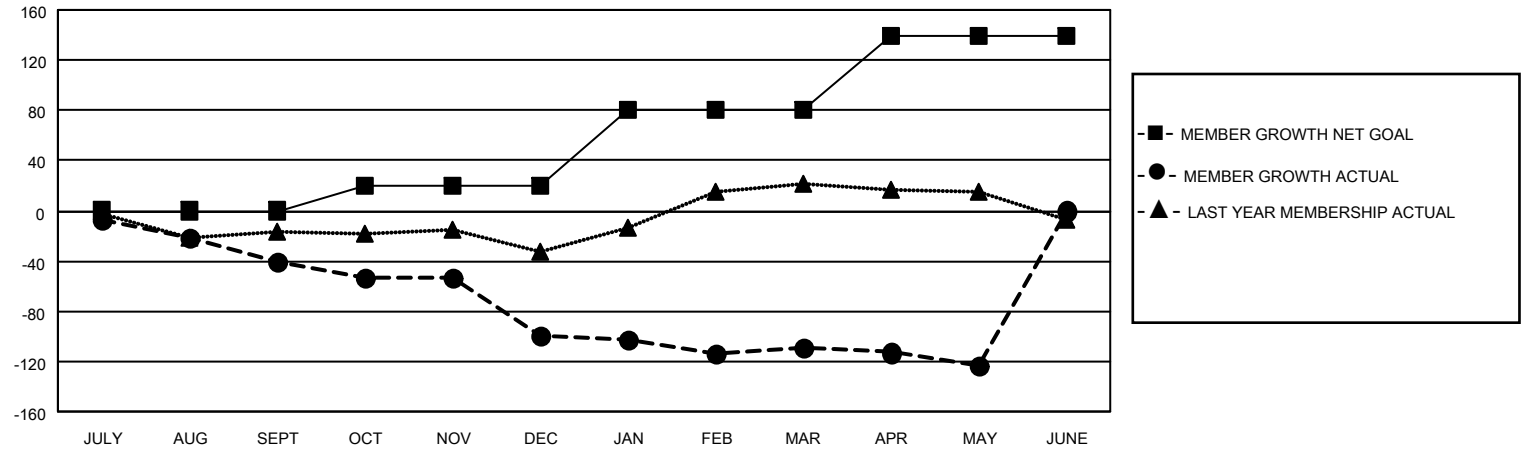
Clubs			
RESULTS FOR 2020-2021			
QUARTER	NEW CLUB GOAL	NEW CLUBS	DROPPED CLUBS
JULY/AUG/SEPT	0	0	0
OCT/NOV/DEC	1	0	0
JAN/FEB/MAR	1	0	0
APR/MAY/JUNE	1	0	0

Members			
RESULTS FOR 2020-2021			
QUARTER	MEMBER GROWTH NET GOAL	MEMBER GROWTH ACTUAL	DROPPED MEMBERS ACTUAL (including transfers)
JULY/AUG/SEPT	0	25	59
OCT/NOV/DEC	20	25	79
JAN/FEB/MAR	60	24	27
APR/MAY/JUNE	60	13	25

GOALS AND ACTUAL NEW CLUBS CUMULATIVE



GOALS AND ACTUAL MEMBERS CUMULATIVE



DROPPED CLUBS: 0	25 CLUBS OF 56 ADDED 1 OR MORE NEW MEMBERS	<u>GENDER DISTRIBUTION</u>
<u>DROPPED MEMBERS</u>	CLICK HERE FOR CUMULATIVE MEMBERSHIP DATA	MALE 962 (59.94%)
DECEASED 27		FEMALE 643 (40.06%)
CLUB CANCELLED 0		TOTAL FAMILY UNIT MEMBERS 315
OTHER 163		FAMILY MEMBERS PAYING HALF DUES 161
TOTAL 190		